



Water Temperature Control - Groups of Fixtures

Thermostatic

Model 320

Thermostatic Mixing Valve of “sealed for life” disposable cartridge construction. Compact design with top and/or bottom blended water outlet makes the Model 320 ideal for recessed enclosure, plumbing chase and utility/mechanical room installation.

Complete operating mechanism of valve is enclosed in a durable polymer cartridge for ease of field maintenance. Powerful internal mechanism and non metallic wetted parts resist mineral deposition.

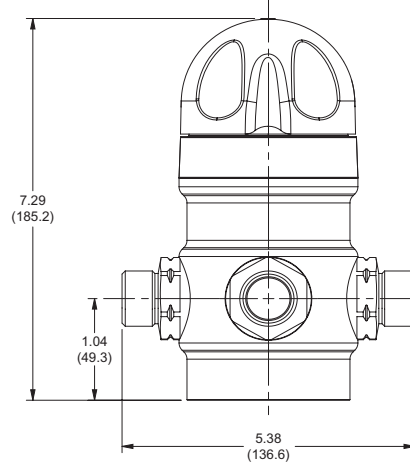
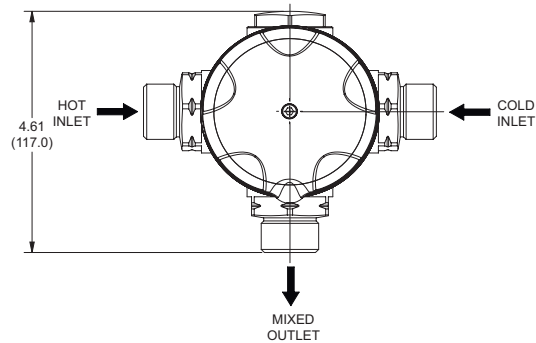
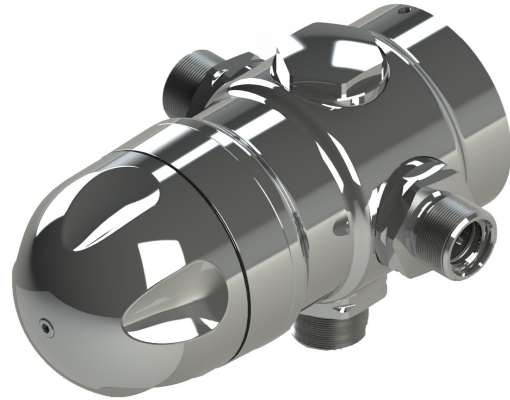
Capable of close temperature control at diverse flow rates between 1 gpm (3.8 lpm) and 24 gpm (91 lpm). Able to blend within 5°F (2°C) of either inlet supply due to “low seepage” across internal proportioning mechanism.

Operational Specifications

- Dual thermostatic elements provide redundancy in the event of individual thermostat failure
- Typical outlet temperature control +/-2°F
- Adjustable maximum temperature limit stop
- Adjustable single temperature lockout
- Thermal shutdown mode upon inlet supply failure

Technical Specifications

- 3/4” MNPT inlets and 3/4” MNPT outlet
- Chrome-plated brass/polymer construction
- Lead Free compliant
- Operating pressures
 - Maximum: 150 psi (10 bar)
 - Minimum: 10 psi (.7 bar)
- Integral inlet check valves and strainers
- ASSE 1017 and CSA B125 certified
- Shipping weight 10 lbs (4.5 kg)



Thermostatic Mixing Valves (GPM and PSI)												
Model	Pressure Drop (PSI)										Min. Flow	C _v
	5	10	15	20	25	30	35	40	45	50		
320	8	11	13	15	17	19	20	22	23	24	1.0	3.4
GPM												

Thermostatic Mixing Valves (LPM and BAR)												
Model	Pressure Drop (BAR)										Min. Flow	C _v
	0.3	0.7	1.0	1.4	1.7	2.1	2.4	2.8	3.1	3.4		
320	30.3	41.6	49.2	56.8	64.4	71.9	75.7	83.3	87.1	90.8	3.8	3.4
LPM												