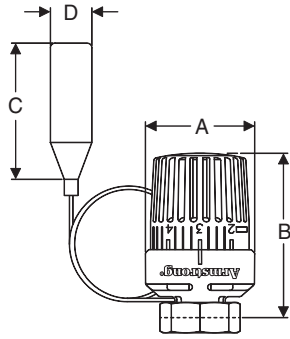
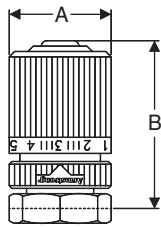


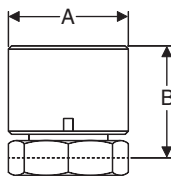
LV-4 Operator Liquid Sensor



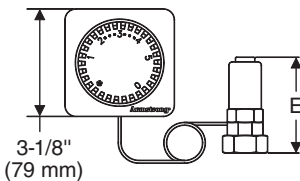
LV-4 Operator Remote Sensor



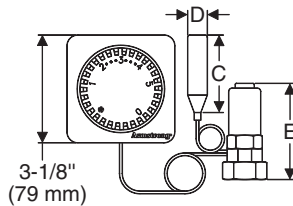
WV-4 Operator
Low Density Wax Sensor



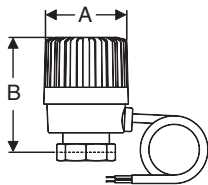
MV-3
Operator*



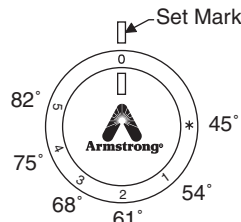
LV-4W Operator (Wall Mount)



LV-4W w/Remote Sensor



EV-4 Electric Operator
24 VAC N.C. or N.O.



Thermostatic Radiator Valve In-Service Repair Tool for Valve Repair Without Interrupting Operation

Failures of thermostatic radiator valves are frequently caused by solid matter suspended in the heating medium, such as weld or solder beads, dirt particles, etc. This results in the loss of the shut-off function of the valve through damage to the sealing surface of the valve and seat.

The use of an Armstrong In-Service Repair Tool provides a quick and easy way to remove the valve insert from an Armstrong radiator valve. Valve repair can then be accomplished without draining the heating system or interrupting its operation.



The LV-4 can be easily adjusted to a comfortable temperature. The temperature to scale relationship is shown to the left. The lowest setting provides freeze protection at approximately 45°F with a high setting of 82°F. Temperature settings on all LV-4 Operators may be limited or locked.

For a fully detailed certified drawing, refer to:

| | |
|--------------------------------------|-----------|
| LV-4 Operator Liquid Sensor | CDY #1053 |
| LV-4 Operator Remote Sensor | CDY #1054 |
| MV-3 Operator | CDY #1058 |
| LV-4W Operator (Wall Mount) | CDY #1055 |
| LV-4W w/Remote Sensor | CDY #1056 |
| EV-4 Electric Operator | CDY #1057 |
| WV-4 Operator Low Density Wax Sensor | CDY #1062 |

Specifications—Valve Bodies and Operators

| Name of Part | Material | |
|-----------------|-----------------------|----------------------|
| Valve Body | Brass (nickel plated) | |
| Main Valve | "A" insert - Brass | "S" insert |
| Main Valve Seat | "A" insert - EPDM | chrome nickel plated |
| Operator Body | Luron | |
| O-rings | EPDM | |

Physical Data—Thermostatic Operators

| Type | LV-4 Operator w/Liquid Sensor | | LV-4 Operator w/Liquid Remote Sensor | | WV-4 Operator w/Low Density Wax Sensor | | MV-3 Operator* | | LV-4W Operator (Wall Mount) | | LV-4W Operator w/Remote Sensor | | EV-4 Electric Operator | |
|--------------------------|-------------------------------|----|--------------------------------------|----|--|----|----------------|----|-----------------------------|---------|--------------------------------|---------|------------------------|----|
| | in | mm | in | mm | in | mm | in | mm | in | mm | in | mm | in | mm |
| "A" | 2-1/8 | 54 | 2-1/8 | 54 | 1-7/16 | 37 | 1-1/2 | 38 | — | — | — | — | 2 | 50 |
| "B" | 3-5/16 | 84 | 3-5/16 | 84 | 2-9/16 | 65 | 1-1/2 | 38 | — | — | — | — | 2-3/4 | 70 |
| "C" | — | — | 2-7/8 | 73 | — | — | — | — | — | — | 2-7/8 | 28 | — | — |
| "D" | — | — | 3/4 | 20 | — | — | — | — | — | — | 3/4 | 20 | — | — |
| "E" | — | — | — | — | — | — | — | — | 3 | 76 | 3 | 76 | — | — |
| Remote Operator | — | — | — | — | — | — | — | — | 3-1/8 x 3-1/8 | 79 x 79 | 3-1/8 x 3-1/8 | 79 x 79 | — | — |
| Capillary Length, ft (m) | — | | 6-1/2 or 16-1/2 (2 or 5) | | — | | — | | — | | 6-1/2 or 16-1/2 (2 or 5) | | — | |
| Weight, lb (kg) | 1/3 (0.15) | | 1/2 or 3/4 (0.23 or 0.34) | | 1/4 (0.11) | | 1/8 (0.05) | | 3/4 (0.34) | | 1 or 1-1/4 (0.45 or 0.57) | | 3/4 (0.34) | |

*For on-off service—not thermostatic.